

Important Considerations

ONLY FOR "NON-CRITICAL ROADSIDE"

- **Confirm citizen is in a safe location with no complicating factors such as:**
 - In the middle of an intersection
 - On restricted roadways
 - Animals or children locked in the vehicle

FAQS

- **What rate will the charge be?**
 - Citizens will be charged a fair market price which varies depending on the service.
- **How long will it take?**
 - Most providers arrive in less than an hour but conditions can vary widely based on weather, traffic and demand in the area.
- **What services does Drivers Premier provide?**
 - Tow, battery jump, fuel delivery, tire change, lock out and winch.
- **What geographical area do you cover?**
 - The Drivers Premier network of roadside providers covers 100% of US zip codes, ensuring high support availability, regardless of location.
- **What kind of training and qualifications do their providers have?**
 - Drivers Premier has stringent requirements for roadside providers to join their network, ensuring that all providers are properly trained and background checked.

About Drivers Premier

Drivers Premier offers roadside assistance support through their pay for service program, Rapid Response, and through a motor club membership. Drivers Premier is backed by the largest white label brand of professional roadside assistance in use by over 50% of the country's biggest auto and insurance brands. Known for delivering positive customer experiences, Drivers Premier ensures reliable support for citizens in need. They offer a range of services including towing, battery jump, fuel delivery, tire change, lock out, and winch assistance.

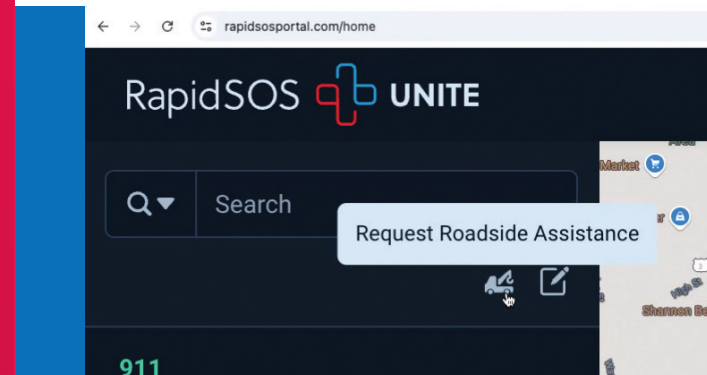
About RapidSOS

RapidSOS is an intelligent safety company that harnesses artificial and human intelligence to fuse life-saving data from 540M+ connected devices, apps, and sensors from 200+ global technology companies to over 21,000 public safety agencies in six countries. Whether there's an unsafe moment or an emergency, RapidSOS Ready devices, vehicles, homes, or buildings deliver essential data to the right place when it matters most. Non-critical roadside with Drivers Premier is available through RapidSOS UNITE Platform. Learn more at www.rapidsos.com.

CORPORATE HEADQUARTERS
400 Rivers Edge Drive | Medford, MA 02155
1-888-633-5151 | www.driverspremier.com



Non-Critical Roadside Assistance



The Challenge of Non-Emergency Calls

4 out of **1000**
911 calls FOR NON-CRITICAL
ROADSIDE SUPPORT

2.5+ M DRIVERS CONTACT 911
FOR NON-CRITICAL ROADSIDE EACH YEAR

NEARLY
70% OF ROADSIDE EVENTS
OCCUR IN A SAFE LOCATION

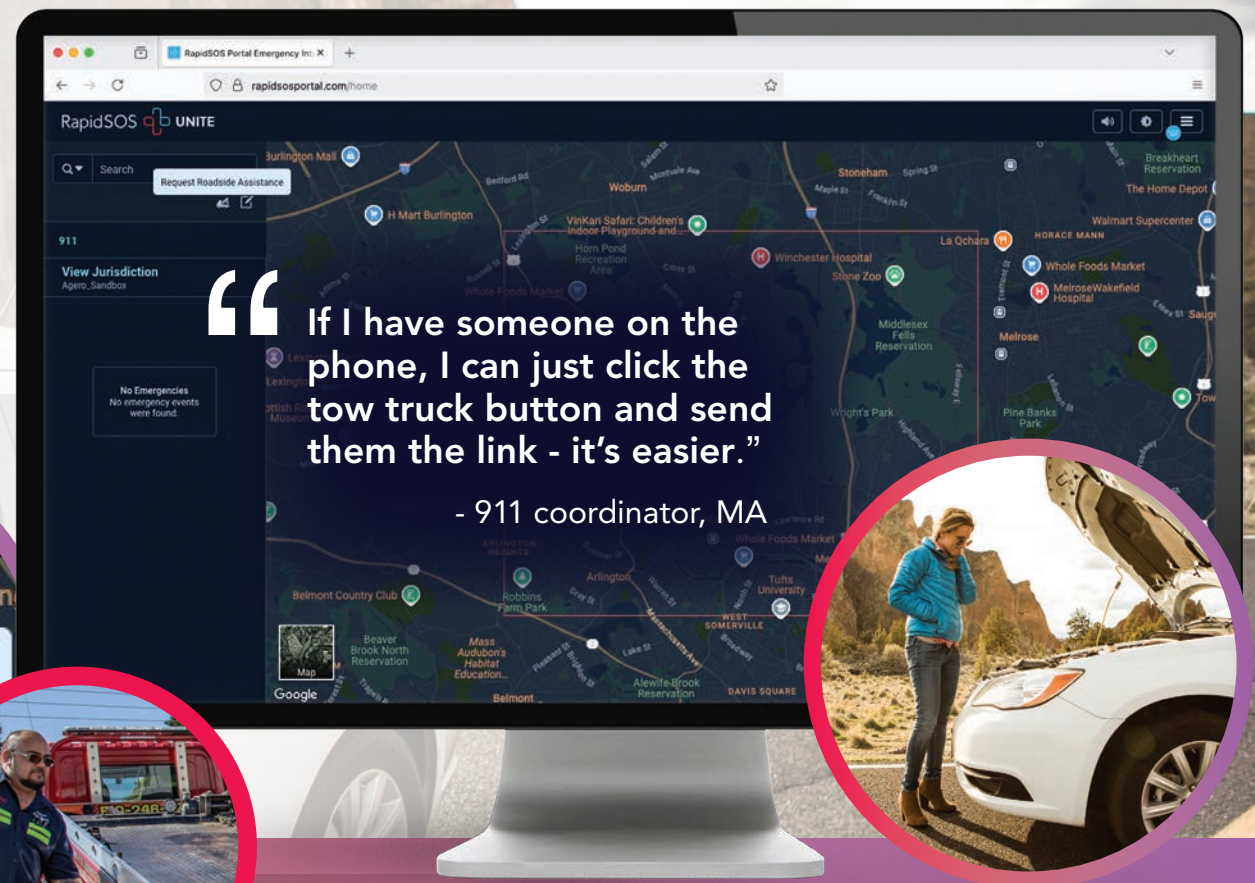
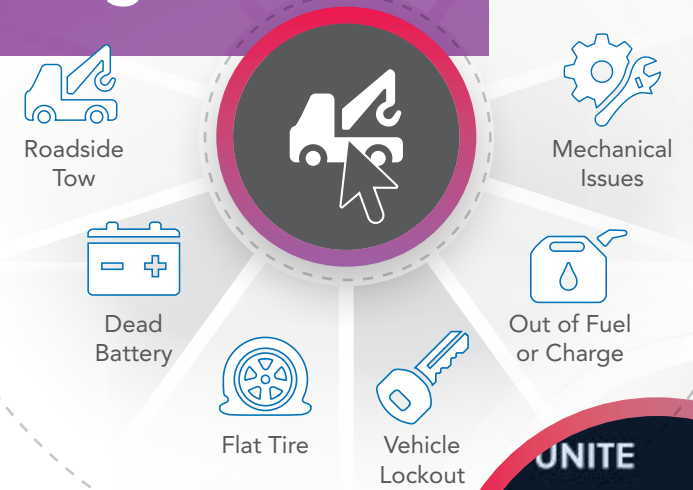
These events can distract ECCs
from critical emergencies.

RapidSOS  | 

Seamlessly connect citizens with roadside support through UNITE

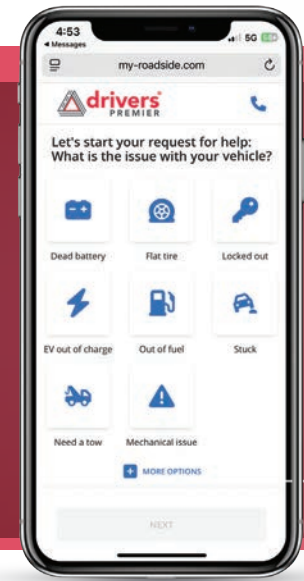
RapidSOS UNITE

- **Just a few clicks** from RapidSOS UNITE
- **Support for everything** from tires to tows
- **Backed by industry leader** in roadside with coverage in **every zipcode, nationwide**
- **Ensuring fast, reliable support** at a fair price

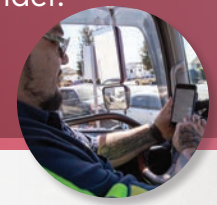
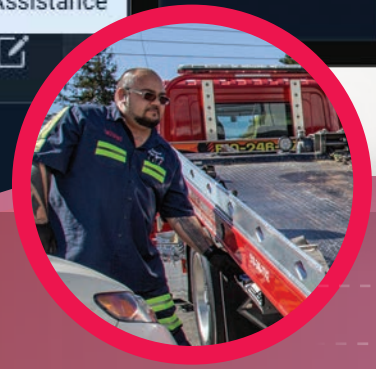


How it works

- 1 Citizen contacts 911 for roadside assistance
- 2 **Dispatcher connects citizen** with roadside through RapidSOS UNITE
- 3 Citizen receives SMS with a link to complete service



- 4 Citizen enters details and pays fair market rate for service.
- 5 Job is dispatched to the best local provider.
- 6 Provider arrives and assists citizen.
- 7 Citizen feels supported and grateful.



“VERY quick service and extremely helpful. Excellent customer service all around.”

- Diane, AZ

“Made everything easy and very, very helpful in a tough spot.”

- Richard, MD